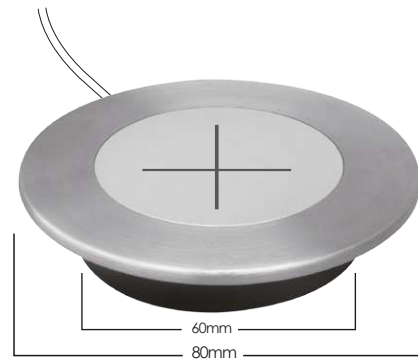




Quick Start Guide & User Manual

## PRODUCT FEATURE



## SPECIFICATION

INPUT: QC 3.0 9V/1.67A, 5V/3A

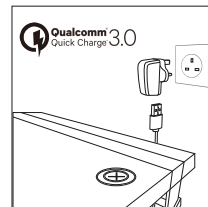
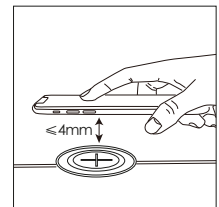
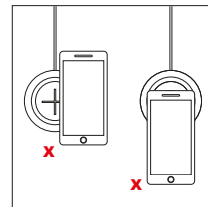
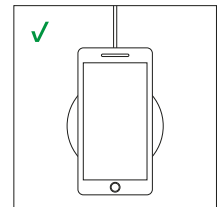
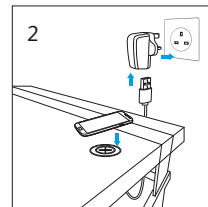
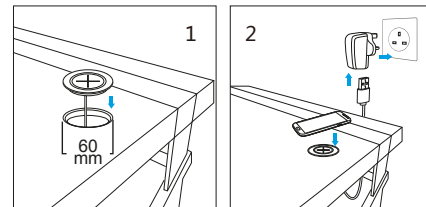
OUTPUT: 5W/7.5W/10W

STANDARD: QI COMPATIBLE 1.2.4

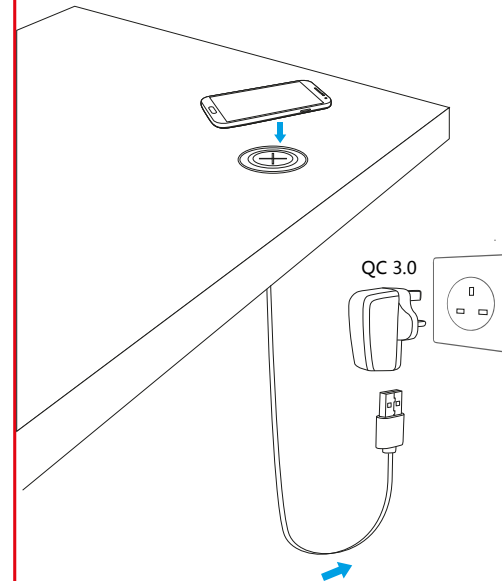
CHARGING EFFICIENCY: 75 %

CHARGING DISTANCE : < 4MM

## Installation Instructions



## Connect To Desktop



## Care & Maintenance

- Avoid humidity, liquid, fire and high temperature as it may cause hazard to users. The product water-proof is IPx1.
  - Do not try to disassemble or modify the product.
  - Do not attempt to disassemble to avoid fire hazard or shortcircuit.
  - Any of damage by abnormal use of product except product defectiveness itself will void the manufacture warranty.
  - Do not use product when the cord is damp, damaged or loose as it may cause short circuit and overheat.
  - Do not bend the power cord.
  - Do not handle the power cord with wet hands or pull the built-in cable.
  - Having the silicon skin to be in contact with overheated devices or objects may cause scald, such as red dots or pigmentation.
  - Keep the device away from microwave.
  - Wireless charging transmitter are compatible with all WPC certified products.
- Qi is a registered trademark of WPC. All rights reserved.